



To Rehome Your Pet

Thinking of rehoming your pet? At LA County Animal Care Centers, our goal is to be a resource to the community. If you are thinking of rehoming your pet, we are here to help you decide the best course of action to take. A couple of questions to consider before bringing your pet to an animal care center- SEE PAGE 8



Tips For Reducing Dog Bites

Every year about 4.7 million people are injured by dog bites. As a parent, you can reduce this risk by teaching your children smart behavior around dogs.- SEE PAGE 4

FREE!

THE FOOTHILLS PAPER

THE VOICE OF THE FOOTHILLS

SATURDAY SEPTEMBER 14, 2024

PLEASE HAVE A HAPPY AND FIRE FREE WEEK!
Sunland-Tujunga's only weekly newspaper

VOLUME 18 • NUMBER 64



This tribute to the 13 soldiers that lost their lives in the final days of Afghanistan is being posted by the American Legion Post 520 in Sun Valley, California. It is with great sadness and pride that this memorial has been established to honor the 13 brave men and women who's bravery allowed others to be free.

We send our love and our blessings and our never ending thanks to them all. God bless them and their families. The memory of their courage will always remain in our hearts.



ROBERT ARNOLD

Monday Morning Quarterbacking!

By Dr. David DeMullé

The community goes around in cycles, sometimes circles, and it is always easy to point the finger and say "They should have done it better!" But if you weren't there, how would you really know?

The La Tuna Canyon fire officially started on Friday, Sept. 1 2017 at 12:45 p.m. That's when the radio traffic assistance at a spot about 1 mile down from the 210 freeway.

It was a small patch of fire burning (about 10' X 20') and the day was calm with no winds. The first responders were a Park Ranger truck and crew that upon arrival, asked "Who's jurisdiction is this?" and finding that it was not within their district, left. The next to arrive was a Rescue Ambulance from LAFD Station 24, a few minutes later their engine arrived.

And everything was still calm. UNTIL a vertical shaft of wind hit the fire and blew ember to start three more fires. Within 45 minutes the fire was roaring up the hillside towards the 210 freeway.

Please see **The View from the Rock** on Page 3

Camp ReadyLA Presentation

I was pleased to join the General Manager of the Emergency Management Department, Carol Parks, and the Program Coordinator for Camp ReadyLA, Carmina De Santiago, to recognize and highlight this year's Camp ReadyLA Youth cohort at City Council.

As Chair of the Public Safety Committee, I am deeply committed to ensuring the safety and preparedness of our communities, especially our youth, as our areas become more susceptible to fires and other natural disasters.

Camp ReadyLA is a free, week-long program hosted by the Emergency Management Department. The program offers young participants aged 17-22 a firsthand experience in the role of emergency managers.

Camp ReadyLA plays a vital role in bridging the gap between theoretical learning and prac-



tical application, providing participants with hands-on experiences that prepare them for future challenges in emergency management careers. ■

Check out The Foothills Paper interactive website: thefoothillspaper.com



COMMUNITY NEWS

Community Help *by Amelia*



Go East, Young Man!

My advice counters that of Horace Greeley, the New York Tribune newspaper

publisher who said, "Go West, Young Man".

Well, the Gold Rush is over. And, as reported in the L.A. sees 'staggering rise' in homeless count," soaring 23% over last year, despite increasing success in placing people in housing according to latest count.

The sharp rise to nearly 58,000 suggests that the pathway to homelessness continues to outpace intensifying efforts that – through rent subsidies, new construction, outreach and support services – got more than 14,000 permanently off the streets last year.

With a significant 6,000 plus more housed in transitional waiting quarters like L.A. Family Housing.

"Staggering," said Los Angeles County Supervisor, Janice Hahn. It is clear that if we are going to end the homeless crisis, we need to stem the overwhelming tide of people falling into homelessness." The startling jump in scary numbers affected every demographic group, including youth (our fastest growing rise), families, veterans, and the chronically homeless. Homeless officials and political leaders point-

ed to steadily rising housing costs and stagnant incomes as the underlying cause.

Homeless also increased sharply in the city of Los Angeles, where the count of just over 34,000 was up 20% from 2016. "There's no sugarcoating the bad news", said Mayor Garcetti as the Homeless Services Authority released its report. "This problem has persisted through recessions. But we can't let rents double every year. I was particularly disappointed to see veteran numbers go up".

"Our city is in the midst of an extraordinary homelessness crisis that needs an extraordinary response. These men, these women, these children are our neighbors."

Rising rents fuel the housing crunch. A Harvard study showed economic stress to two million households in L.A. and Orange counties whose outpay of rent exceeded 30% of income, and slid upwards to 50%. During the same period of 2000 to 2015, the median rent, adjusted for inflation, increased more than 30%, while the median income remained flat.

Currently, the median asking price for rentals

countywide is \$1,995 for one bedroom apartments and \$2,416 for multifamily units, according to the real estate website Zillow. I am deeply concerned that over the next few years we will continue to be overwhelmed by people for whom rents are simply unsustainable," said Supervisor Sheila Kuehl. She called for changes in land use and rent control regulations to boost affordable housing.

So, we need more housing. How about tenants double up in Section VIII - get married? What a novel idea! Call me 'old school' but we need all the options we can get. Thank God (another novel idea) Proposition HHH was approved by Los Angeles voters last November to provide \$1.2 billion in bond proceeds to build 10,000 apartments the next ten years. And thank the Lord again, county voters approved Measure H to provide \$3.5 billion for rent subsidies and services.

That will get 15,000 into housing, but currently only 1 of 4 is "sheltered" in emergency or transitional programs, leaving 43,000 on the streets. And the chronically homeless - on the streets for a year or

more or multiple times and suffering from mental illness, addiction or physical disability - increased 20% to more than 17,000.

Our numbers are not increasing locally--for now! But good news!! Governor Jerry Brown passed law allowing a second unit to be built on R1 property; attached or detached or built over an existing garage, just so the square footage does not exceed half the square footage of the front house.

It must adhere to local code, but it can be rented out. Of course homeowners can also convert a bedroom with outside access and chores, that may enable them to stay longer in their own home. But, whether you are a homeowner or a homeless person, I say "Go East Young Man" (or "Old Man") especially if you like to fish; to Kentucky, Michigan or North Carolina --wherever your roots are from.

Life is cheaper and less harried. Get back with a brother or son, a mother or ex-wife. I'm available to drive to an airport, train or bus. Which I've done many times.

And it works. ■

THE FOOTHILLS PAPER is published weekly. All content is copyrighted and may not be reproduced without written consent of the publisher. All submissions to this newspaper become property of THE FOOTHILLS PAPER and may not be republished in whole or in part. The opinions expressed by contributing writers do not necessarily express the views of the publisher nor staff of this newspaper. TFP is available free of charge. No person may, without prior written permission from TFP, take more than one copy of each edition (stated value: \$1). Only authorized TFP distributors may distribute THE FOOTHILLS PAPER. THE FOOTHILLS PAPER is a non-profit newspaper produced by the OSS-Spectrum group.

EXECUTIVE EDITOR/ PUBLISHER

Dr. David DeMullé
editor@thefoothillspaper.com

Joan Slater- Lifestyles
Editor

Dyan McManus, RIP

WITH THANKS TO
all our volunteers
that make
The Paper happen!

THE FOOTHILLS PAPER

TheFoothillsPaper.com
Tujunga CA 91043
(818) 951 0943



Associated
Press



Press
Photographers
Association of
Greater Los
Angeles



L.A.
Press Club



International
Combat Camera
Association

By CD-7, Monica Rodriguez

Too often, our police and firefighters are asked to respond to situations that are better suited for mental health professionals who are trained specifically to assist those experiencing a mental health crisis. Each year there are approximately 22,000 LAPD and 30,000 LAFD calls for services that involve some aspect of mental health emergencies. This week marks the beginning of transformative change in how we approach mental health care in Los Angeles.

After exhaustive negotiations, I'm proud to announce the agreement with the County of Los Angeles for Therapeutic Mental Health Vans has been adopted, which will allow the City to deploy appropriately trained professionals on mental health calls with fire personnel. The program will dispatch five Therapeutic Vans staffed by a Peer Support Specialist, a Licensed Psychiatric Technician, and Clinical Driver. I was persistent in advocating for the \$2 million in the city budget to launch this pilot with the county, to match their \$32million invest-

ment and to include a van assigned in my district which will be critical to serving our San Fernando Valley Region. They will operate on two 12-hours shifts, 24/7, for one full year. This program meets clients with engagement, support, and recovery-focused interventions in a way that increases trust, safety, and care.

I'm to launch this model of emergency response with the County. This moment represents a shift and a commitment to aligning the right response to meet the needs of the public, so that we can save lives citywide. ■

Everything we do is documented so that we know what we did right or wrong for the next incident. Here is my log for the beginning of the La Tuna fire.

FROM MY FIRE LOG.

Vegetation Fire, 1:26PM: 10850 W La Tuna Canyon Rd; FIRE ENP 1:48: Getting a handle on La Tuna, can handle with units assigned.

FIRE EPN 1:50: Fire Head stopped.

FIRE EPN 2:22: La City going big on resources.

FIRE EPN 2:23: Fire has jumped the 210 freeway.

Brush Fire; 2:23PM; High winds caused embers to create a spot fire across the 210 Fy approx 1/4 away. There are a (currently) unknown number of homes at risk and structural defense resources enroute.

Additional 25 LAFD resources ordered in addition to full brush response from ANF, LAC and engines from Glendale Fire.

Brush Fire; 4:22PM; Precautionary evacuation (number unk) of Reverie Canyon. No homes damaged and no injuries reported. Awaiting acreage and additional evacuation info. Over 250 LAFD

FFs on scene plus full brush assignments from ANF, LACoFD, Vergudo and at least 5 engines from Glendale Fire. In addition to LAFD water dropping helicopters, to include the contracted Erickson Air-Crane, LACoFD has 4 helicopters and 2 fixed wing super scoopers on scene.

Brush Fire; 4:46PM; Fire is at approximately 500 acres with estimated 50 homes threatened. Precautionary evacuations underway in Reverie and Haines Canyon with loosely estimated figure of 200 homes evacuated. The evacuation center is Verdugo Hills High School 10625 Plainview Ave, Tujunga, CA 91042. The 210 FY will remain CLOSED in both directions from Lowell to Sunland. LAFD now has over 260 firefighters on scene in addition to a significant number from our assisting agencies (Verdugo, ANF, LACoFD, Pasadena, Burbank and Glendale). Current temp is 106d with winds at 11mph. Most of LAFD ground resources are dedicated to structural defense and our tractor units working to create breaks and stop the fire from moving to the Burbank side of the canyon.

ENP 5:34: Looking at La Tuna

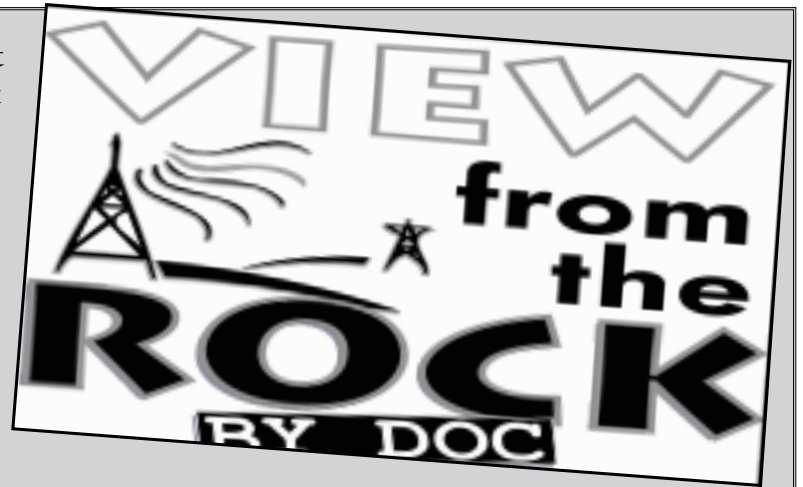
fire about to impact the comm. towers on Verdugo peak.

Brush Fire; 9:04PM; Fire at approx 1500

acres and 10% containment. We have a very large amount of active fire on both sides of the 210 FY.

The 210 FY will remain a HARD CLOSURE from Lowell to San Fernando Rd likely through tomorrow morning.

The precautionary evacuations remain in place through the night (Reverie and Haines Canyon) no additional evacuations. LAFD helicopters will continue to perform water drops through the night, all 250+ LAFD firefighters will continue through the night as will the camp hand crews. This topography driven fire has moved into Burbank limits and we are in Unified Command with Burbank Fire. We understand many residents on adjacent canyons in McGroarty Park area can see flames and



are concerned. Currently, the fire is not burning in that direction and we have no evacuations in place for that area.

FIRE ENP: 10:13: Fire is? mile from homes in Burbank.

FIRE ENP: 10:14: Other reports saying 100 ft from homes now.

FIRE ENP: 10:26: Verdugo just sent 5 add. engines to Burbank for structure protection.

FIRE ENP: 10:49: Fire visible from Santa Monica.

FIRE ENP: 11:23: 2nd alarm brush for Verdugo Immediate Need.

FIRE ENP: 11:51: Heavy Fire on CrestView-Immediate home threat.

And that is how the fire ran on DAY ONE!

Beef

Harmony Farms features the most healthful beef available, with the lowest possible prices. Our beef is all natural, minimally processed, and guaranteed to be free of added hormones and pesticides. We offer grass fed, free range beef from Australia and New Zealand. We also offer fresh local California beef that has been tested and is free of antibiotic and pesticides residues, surpassing the USDA requirements for "natural" products. We carry the freshest, most tender beef from Australia-Waygu. Waygu beef is renowned for its marbling, tenderness and extraordinary flavor, and is certified to be free from GMO feed. We flash freeze our meats and poultry to prevent any potential for contamination. Harmony Farms maintains an "A" rating from the State of California for our processing standards. You can have confidence in the quality of our beef!



Chicken

Harmony Farms offers a wide range of poultry products. Our chicken is ALL NATURAL, minimally processed and completely free from added hormones, chemicals, pesticides, and preservatives. The chickens are fed a diet of grains, vitamins, and minerals. We also offer organic, free range sustainably raised birds, which are certified to be fed 100% organically grown, GMO free vegetarian feed. You will taste that our chicken has that "old fashioned" chicken flavor. It simply tastes superior!



Lamb

We offer lamb from Australia and New Zealand, grass fed and raised on lush green pastures. This lamb is certified to be free of hormones, growth promoters and antibiotics. All of our meats and poultry meet our rigorous high quality health standards.



Pork

We offer Beeler's all natural pork products which are minimally processed and contain no artificial ingredient or antibiotics. Beeler's pork - simple, natural ingredients, and never any nitrates. Livestock are allowed to grow and develop naturally, and that makes Beeler's pork as pure and natural as pork can be. You can be assured that Beeler's pork products are never altered or diluted, locking in all of the great natural flavor that you have come to love!



Buffalo

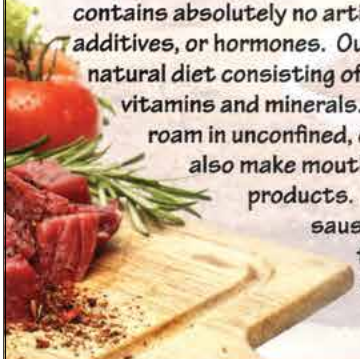
Free range, grass fed buffalo is low in fats and cholesterol, and is an excellent source of Omega 3 and Omega 6 oils. The buffalo are fed a finishing grain ration for 4-6 months and never fed hormones. Buffalo is tender and has a sweet, rich flavor, and is a healthy and tasty alternative to beef.

Wild Game & Exotic Meat

We have the largest selection of All Natural, minimally processed game meats in the country. Great recipes too!
Buffalo, Elk, Venison, Wild Boar, Duck, Geese, Quail, Pheasant, Antelope, Cornish Game Hen, Rabbit, Ostrich, Alligator, Veal.

Turkey

Harmony Farms is known throughout California for our exceptional turkeys. Our fresh turkeys are all natural with minimal processing, and contains absolutely no artificial ingredients, additives, or hormones. Our turkeys are fed a natural diet consisting of corn, soy, and natural vitamins and minerals. Our free range birds roam in unconfined, open spaces. We also make mouth watering turkey products. Please enjoy our fresh sausages and smoked turkey. Healthy, tasty and fresh!



www.harmonyfarmsca.com

HARMONY FARMS FOR ALL YOUR BBQ NEEDS!

Everybody needs a haircut and the only place to go in Tujunga, is at my favorite barber.



CALL FOR APPOINTMENT
818 855 3502

Verdugo Hills Liquor

**7119 Foothill Blvd.
Tujunga CA 91042
(818) 353-4641**

Tips For Preventing Dog Bites

Every year about 4.7 million people are bitten by dogs. Among these, most are children. As a parent, you can reduce this risk by teaching your children smart behavior around dogs. Laying the groundwork early will go a long way towards preventing dog bites and keeping your family (and your dog) safe. Here are some basics.

Never leave a young child unsupervised with a dog. This goes for any dog, including your family dog. Until you are 100% certain that your child is old enough to understand dog behavior and demonstrate good judgment, you should oversee all contact.

Never interact with a loose dog. If your child sees a dog running in the neighborhood, they should not approach it. Exercise your judgment as to whether you should approach the dog to find the owner or contact Animal Control.

An eating or sleeping dog is off limits.

This is the dog's personal time.

Leave him alone.

If a dog wants to be alone, let him. If a dog removes himself from a sit-

uation by going into his crate or another room, respect his space.

No teasing.

This goes for withholding toys and treats, and pulling tails and ears.

No "roughhousing" with the dog.

Don't let your children climb on, drag around or wrestle with the dog. No yelling in the dog's face.

Greet dogs correctly.

When approaching a dog you do not know, always ask the owner if it's okay to pet the dog. If the owner says it's ok, proceed to greet the dog this way:

Do not make direct eye contact.

Eye contact can be interpreted as aggression.

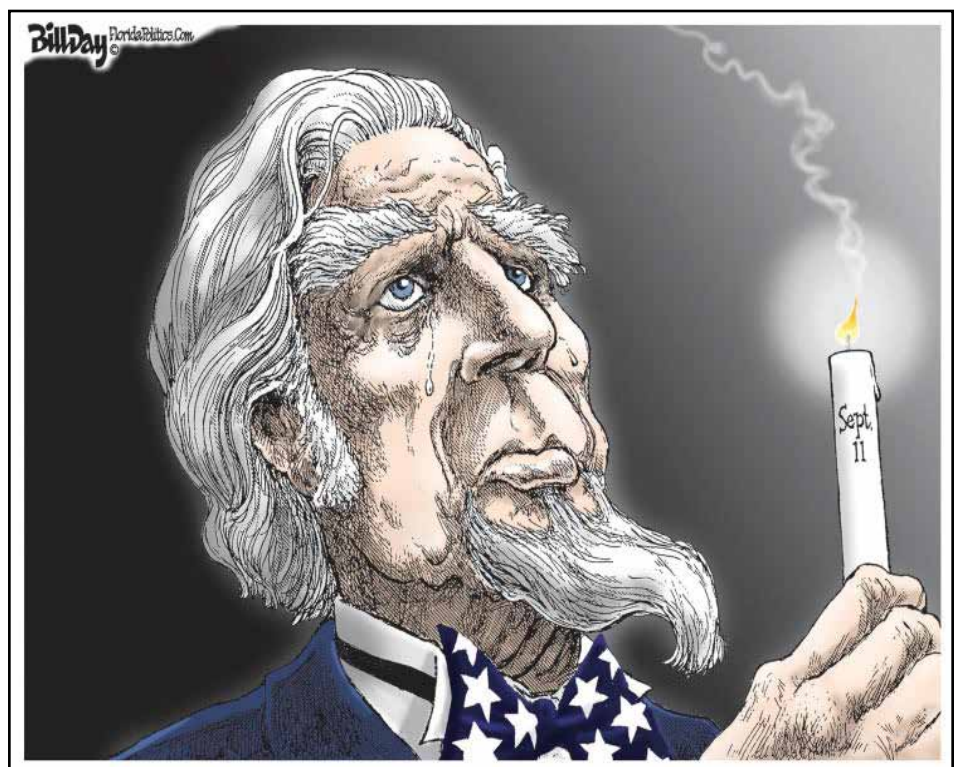
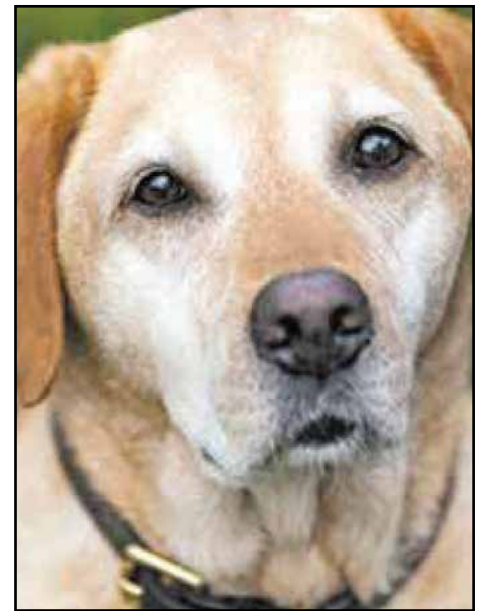
Approach the dog from the side (never from above as this can be interpreted as dominance). Let the dog approach and sniff you first (don't force yourself on the dog).

If the dog looks at ease and willing, pet him on the side of his face, body or back (not his ears or tail)

Language

These telltale signs will tell you that a dog would rather be left alone:

- Covering
- Licking lips (when no food is nearby)
- Panting (when not overheated)
- Furrowed brow Walking in slow motion
- Yawning
- Hyper-vigilance/pacing
- Trying to move away ■



HARMONY FARMS



Whatever kind or cut of fresh BBQ ribs you want, Sonny will cut it for you!

We have Free-Range Turkeys all year long!

818-248-3068



For the absolute best steak, get Harmony Farms' Australian "Kobe-style" Wagyu Beef!

H.F. Meats, Inc. **HARMONY FARMS** *Naturally Grown* **Raw Meat for Pets**



"Harmony Farms provides raw meat for pets because we believe that it's their natural way of eating."

SINCE 1997

V&S

ASE AUTOMOTIVE SERVICE EXCELLENCE

COMPLETE AUTO REPAIR

WE SERVICE ALL TYPES OF HYBRID & ELECTRIC VEHICLES

Starters • Alternators • Timing Belts • Engines
Transmissions • Water Pumps • Tune-ups • Axles & More!

"RIGHT JOB, RIGHT PRICE, RIGHT HERE!"



Monday - Friday 8:00 AM to 6:00 PM • Saturday 8:00 AM to 3:00 PM

818.352.9666 • 818.352.6779 7139 - Foothill Blvd. Tujunga, CA 91042



MOULARD

DUCK BREAST



THIS DUCK IS DIFFERENT

DUCKCHAR Moulard Duck Breast is a totally different and better duck experience. What's the best way to describe it? It tastes like steak with a rich duck flavor twist.



ANOTHER DAY IN THE HOOD



Heat Safety for Pets

Quick tips:

- Never leave your pet in a parked car, even for “just a minute”:
 - On an 85-degree day, the temperature inside a car with the windows opened slightly can reach 102 degrees in 10 minutes!
- Don't travel with pets in a poorly ventilated vehicle
- Watch the humidity:
 - If the humidity is too high, dogs are unable to cool themselves by panting and may overheat.
- Limit exercise on hot days
- Keep pets off hot pavement
 - When the air temperature is 77, asphalt has been measured at 125 degrees!
- Ensure that your pet has access to clean water and shade
- Learn to recognize the signs of heatstroke in dogs!

Signs of Heat Exhaustion in dogs:

- Heavy panting and excessive drooling
- Rapid or irregular heartrate
- Wobbly “drunken” gait and/or muscle tremors
- Frequent breaks lying down
- Glazed eyes

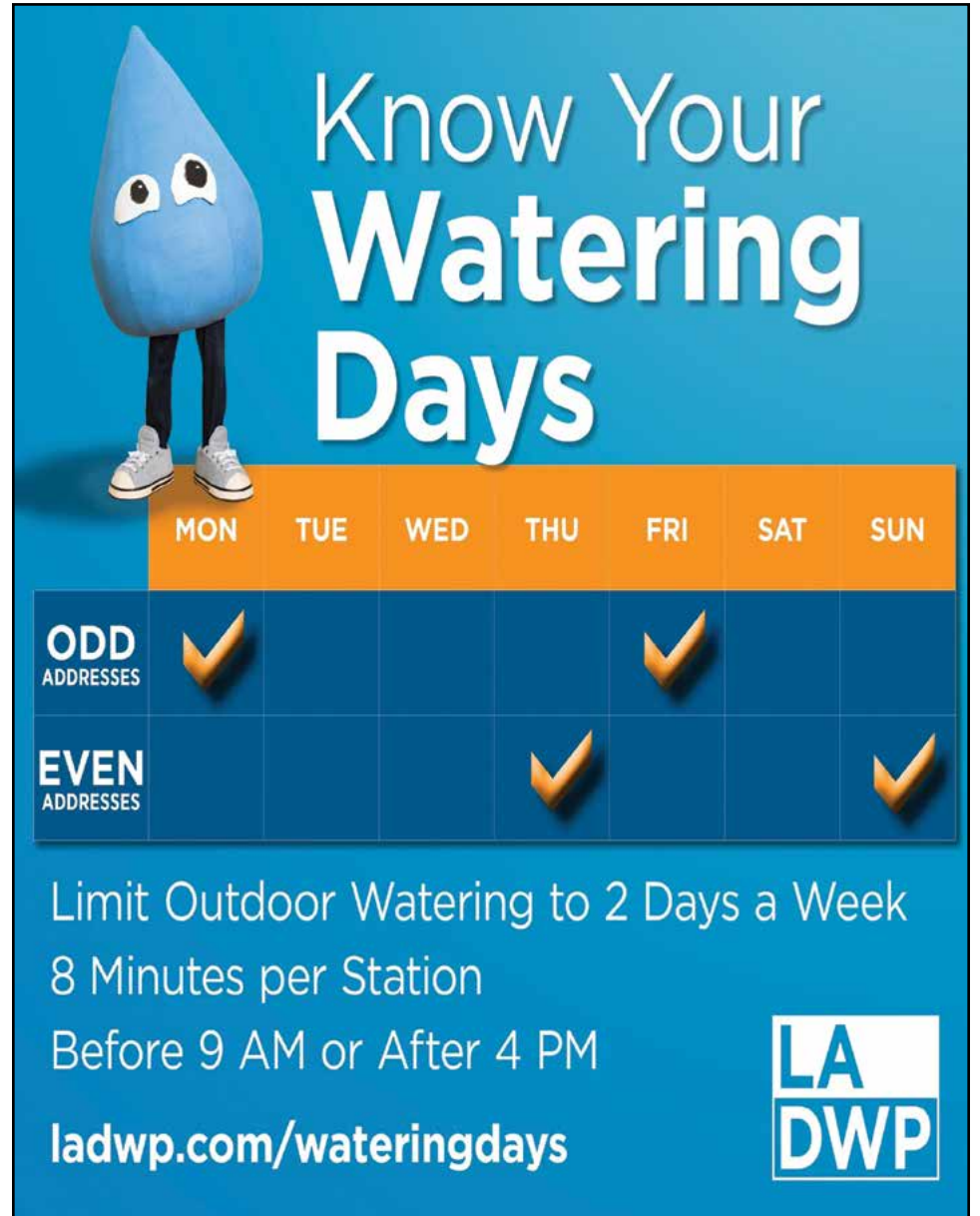
How to cool down an overheated dog:

- Let them stand in cool water or soak feet in cool water
- Put cool water on your dog's chest
- Allow the dog to rest in shade and provide cool water to drink

Online Resources

Humane Society of the United States: Keep Pets Safe in the Heat
<http://owl.li/KHXGP>

Adopt a Pet: Summer Heat Safety for Pets:
<http://owl.li/KHXSn>




Know Your Watering Days

	MON	TUE	WED	THU	FRI	SAT	SUN
ODD ADDRESSES	✓				✓		
EVEN ADDRESSES				✓			✓

Limit Outdoor Watering to 2 Days a Week
 8 Minutes per Station
 Before 9 AM or After 4 PM

ladwp.com/wateringdays




By AMAC Certified Social Security Advisor Russell Gloor, Association of Mature American Citizens.

Dear Rusty: I have a question about my Social Security benefits. Would I be correct to assume that part of the monthly Social Security income I get is a repayment of what I contributed to the fund while I was working? If so, how much of my monthly benefit payment is my own money coming back to me? **Signed: Curious Beneficiary**

Dear Curious: I'm afraid that is not how Social Security works. The money you contribute to Social Security during your working years does not go into a special account to be repaid to you. Rather, the Social Security taxes you pay while working are used to pay benefits to all those currently receiving Social Security benefits. The system is, in effect, a “pay as you go” program where all those currently contributing help pay benefits for all those now receiving. What your contributions do, however, is earn you “quarter credits”

Does Some of my Social Security Payment Include Repayment of my Contributions?

and, when you have enough credits, you become eligible for Social Security retirement benefits for life. Generally, someone must have about 40 quarters (about 10 years) contributing to Social Security to be eligible for SS retirement benefits.

How much you receive monthly is determined not by how much you contributed but, rather, by how much your work earnings were over your lifetime. You will get a percentage of your average pre-retirement work income as your monthly Social Security payment, but that is also affected by your age when you claim benefits. It is your average lifetime earnings (adjusted for inflation) which determines your “Primary Insurance Amount” (or “PIA”). Your PIA is what you get at your Social Security full retirement age (FRA), but your age when you claim benefits determines if you get more or less than your PIA. Claiming SS before your FRA means a smaller monthly benefit, while waiting longer than your FRA means a benefit higher than your PIA. (SS benefits reach maximum at age 70). FYI, each person's FRA is different based on the year they were born, but full retirement age today is between age 66 and 67. When you claim benefits relative to your FRA determines how much of

your PIA you will receive each month.



So, your contributions to Social Security aren't used to determine your monthly benefit amount, but your average lifetime work earnings and age when you claim are. Nevertheless, you may be interested to know that most people get back everything they have personally contributed to Social Security within about 3 to 5 years of collecting their benefits. In that sense, Social Security is an exceptionally good deal, since most Americans now collect benefits for about two decades. And therein lies much of Social Security's financial dilemma – people are now collecting benefits for many more years than the current program is designed to support. And that is what Congress needs to fix as soon as possible. The Social Security trust funds (which now provide supplemental money to pay benefits) are projected to be depleted around 2033, which will mean a cut in everyone's monthly Social Security payment, unless Congress acts soon to reform the program and restore it to fiscal solvency. ■

The Burbank African Violet Society

The Burbank African Violet Society will be having their club meeting on Thursday morning September 19, 2024 @ 10:00 A.M. The location is The Little White Chapel Christian Chrch,

1711 North Avon Street in Burbank. Vice President John Hershey will present the program on “An A.V.S.A. Judged Moini Show.” The three certified A.V.S.A. judges are Club President, Chris Hedberg, Vice President, John Hershey, and club member Luis Pineda. All members are to bring blooming African violets and their cousins to the meeting to participate in the judged show.

The meetings include a learning lab, show 'n' tell, questions and answers, raffle, and silent auction tables. Plants and supplies are available for sale. Refreshments are served and

Friendships are made. Guests are always welcome to attend the meetings. For more information, please telephone (661) 940-3990 or reference our website: www.burbankafrikanviolets.weebly.com ■

THE FOOTHILLS PAPER Presents TAKE MY CARD

Reach More Readers With Your Business Card Featured Here! • Find Out How at sales@thefoothillspaper.com

FOOTHILL Barber Shop
818.855.3502
CALL FOR APPOINTMENT! 6828 VALMONT, TUJUNGA

STAR HAND WASH
Hand Wax • Complete Detail • Steam Clean Engine
8220 Foothill Blvd, Sunland CA 91040 Tel: 818.352.8393

THE FOOTHILLS PAPER
THE VOICE OF THE FOOTHILLS
THEFOOTHILLSPAPER.COM

Volunteer with *The Foothills Paper*. We can use your help in the office, writing stories, taking photos, uploading materials to our Web site and plenty of other helpful things. Support your local independent newspaper!

MIMIC IRON WORK
Mike H. Jarian
7249 Foothill Blvd. Tujunga, CA 91042
T: 818 352 9692
F: 818 352 5245
Call for a free estimate no job is too small

Michael A. Hendrix
Classical guitarist • composer • instructor
818 951 4533
michael.hendrix3@verizon.net

Jeremy Jover
U.S. Navy
Seabee Veteran

Call for **FREE SOLAR QUOTE!**

SOLAR FOR LESS!

Jeremy's ELECTRIC "A Name You Can Trust"

FULLY INSURED

818-951-1171

State Lic. #978429

Owner of
Jeremy's Coffee Shop
Open Daily - Home Cooking
Best Breakfast in Town!
3009 Honolulu Ave. (La Cr)
818-248-7772

COMPREHENSIVE CARE FOR NON-LIFE THREATENING ILLNESS AND INJURY
Walk in to Foothill Urgent Care for high-quality services to treat a variety of ailments and injuries, including:

- Cold, cough, flu
- Sprains, strains, broken bones
- Minor eye injuries
- Vomiting, dehydration
- Rashes, other skin conditions
- Asthma, bronchitis, pneumonia
- Allergic reactions
- Gastroenteritis, stomach pain
- Kidney stones, renal colic
- Neck, back pain
- Infections
- Aches, pains
- IV fluid, IV medications
- EKGs, X-rays, laboratory services
- School, camp, sports and work physicals
- DOT testing

FOOTHILL URGENT CARE

Here For Your Immediate Needs!

When Would I Go to an Urgent Care Center?
An urgent care center offers you convenience and affordability compared to an emergency room's long wait and high cost. This is the right choice when you need a medical provider for non-life threatening illnesses and injuries but you do not have an appointment. You could also visit an urgent care facility when your regular physician is on vacation, closed on nights and weekends or unable to offer you a timely appointment to address your medical concern.

Are All Urgent Care Centers the Same?
Not all urgent care facilities provide the same level of treatment. At Foothill Urgent Care, we deliver advanced medical treatments you cannot find at a regular urgent care center. Foothill Urgent Care also offers lower costs for care than a hospital-affiliated urgent care center or a trip to the ER.

Do I Need an Appointment for Urgent Care?
A major convenience of an urgent care center is that you do not need an appointment for care. You can simply walk in when you require treatments. At Foothill Urgent Care, we also accept appointments to meet your preference.

Does Foothill Urgent Care Charge as an ER or Urgent Care Center?
We charge as an urgent care center while providing advanced treatment similar to an ER. Our cost is a fraction of what you would pay for a trip to the ER and close to the cost of a regular office visit.

Dial 911 immediately for any Medical Problem that appears to be Life-Threatening

how hot is too hot?

Temperature	Small Dog	Medium Dog	Large Dog	Risk Level
60°	1	1	1	① No evidence of risk: Have fun outside!
65°	1	1	2	② Risk is unlikely: Have fun outside, but be careful!
70°	2	2	3	③ Unsafe potential, depending on breed. Keep an eye on your pet outdoors.
75°	3	3	3	④ Dangerous weather developing. Use caution.
80°	3	3	4	⑤ Potentially life-threatening heat. Avoid prolonged outdoor activity.
85°	4	4	5	
90°	5	5	5	+1 if obese
95°	5	5	5	+1 if brachycephalic breed
				+1 if less than 6 months old or elderly
				-1 if area is shaded from sun
				-1 if water is available

source: adapted from The Tufts Animal Condition and Care (TACC) **Petplan** GoPetplan.com



TO REHOME YOUR PET

Thinking of rehoming your pet?

At LA County Animal Care Centers, our goal is to be a resource to the community. If you are thinking of rehoming your pet, we are here to help you decide the best course of action to take. A couple of questions to consider before bringing your pet to an animal care center:

Do you want to keep your pet but need help with resources (medical, pet supplies, or something else)? If yes, learn more about available resources [HERE](#).

Is there something wrong with your pet medically? Behaviorally? If yes, learn more about available resources [HERE](#).

Are you certain you can no longer keep your pet and want to rehome them?

Would you be willing to take your pet back if your life circumstance changes? If yes, have you considered short term housing with a friend or family?

We strongly encourage you to explore all options before bringing your pet to an animal care center. Animal care centers can be a stressful place for your pet, and he/she is better off staying at home until a new home is found. Bringing your pet to one of our animal care centers should be a



last resort. The best time to change your mind about rehoming your pet is before you bring it to us.

Here are some helpful tips to try before you decide to bring an animal to one of our animal care centers:

Is there a friend or family member that would be willing to adopt your pet from you?

Have you tried re-homing your pet using online platforms like Next Door, Facebook, Home to Home, or contacted breed specific rescues?

Make sure to spread the word by enlisting the help of friends and family.

Give yourself time to re-home your pet to find the best home.

Your home is usually the best place for your pet while you find a new adopter.

Remember to use caution when re-homing your pet to unknown individuals.

Ask questions and meet in a public place. Do they have a fenced yard? An established relationship with their veterinarian? Are there other pets/children in the house? Are they away from home during the day for long periods of time? Do they keep their pets indoor vs outdoor?

If you are interested in keeping in touch to hear updates, make sure you make that clear and set expectations for the new home up front.

Work on increasing adoptability by making sure your pet is up to date on vaccinations and spayed/neutered.

Remember to update microchip and license information if you do rehome your pet.

Do you need access to a resource to help retain your pet? Help is out there!

Check out our resources list [HERE](#) for a list of organizations that offer help for pet owners.

If you need additional assistance, please reach out via email to your local Animal Care Center for more information.

Our staff will reach out to you to discuss further resources if needed and help you make an appointment to bring your pet to a local Care Center as the last resort after counseling session.

Agoura: agoura@animalcare.lacounty.gov

Baldwin Park: baldwinpark@animalcare.lacounty.gov

Carson: carson@animalcare.lacounty.gov

Castaic: castaic@animalcare.lacounty.gov

Downey: downeyctaip@animalcare.lacounty.gov

Lancaster: acclancaster@animalcare.lacounty.gov